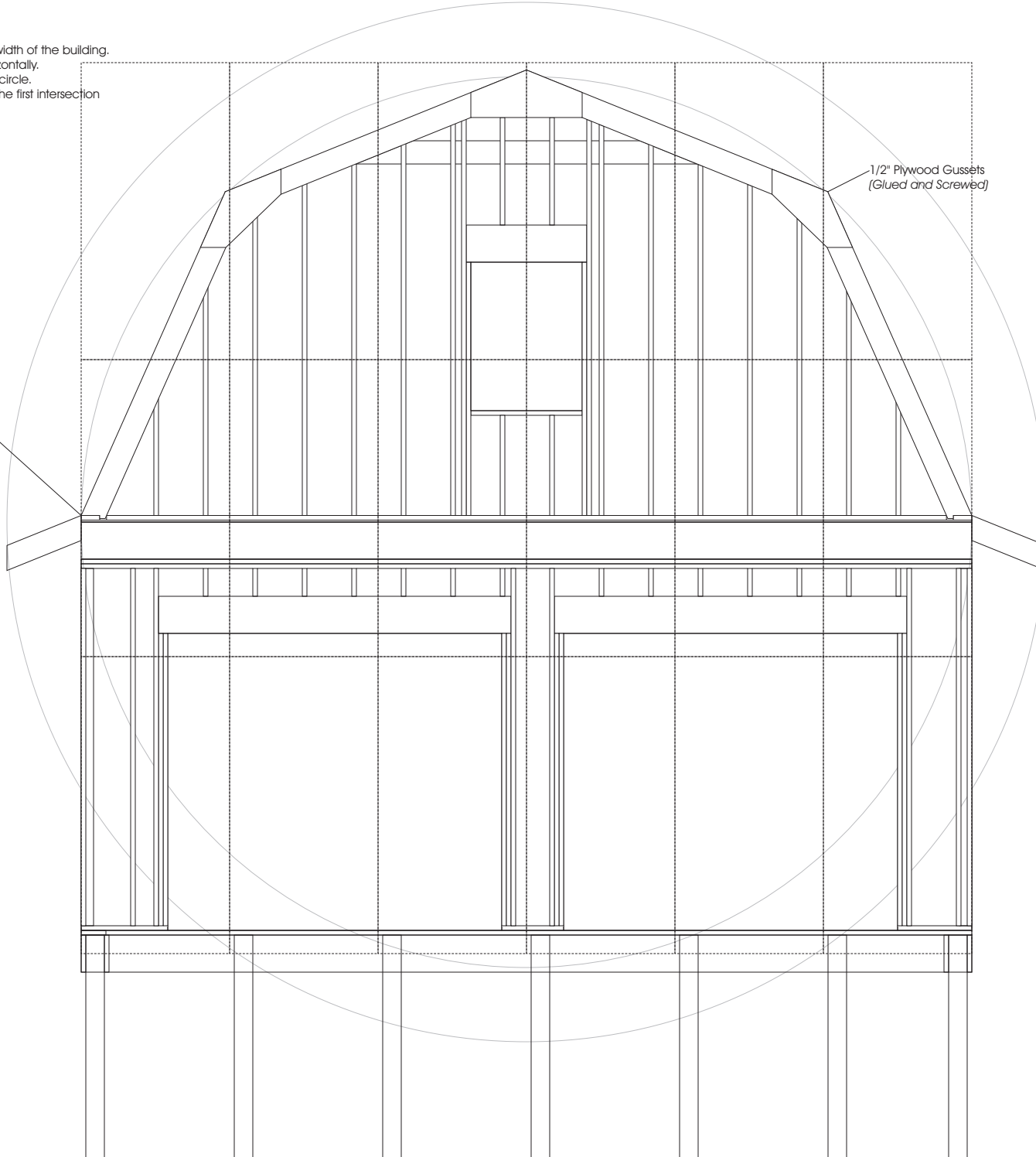
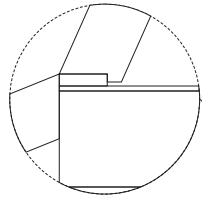
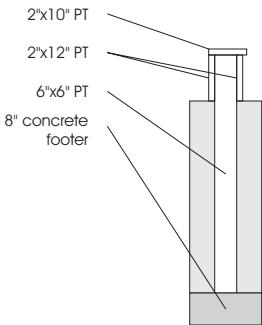


**To CALCULATE A GAMBREL:**

Draw a circle whose diameter is the width of the building.  
 split the width into six equal parts horizontally.  
 the peak should be at the top of the circle.  
 The two roof lines should intersect at the first intersection  
 of the first sixth line and the circle

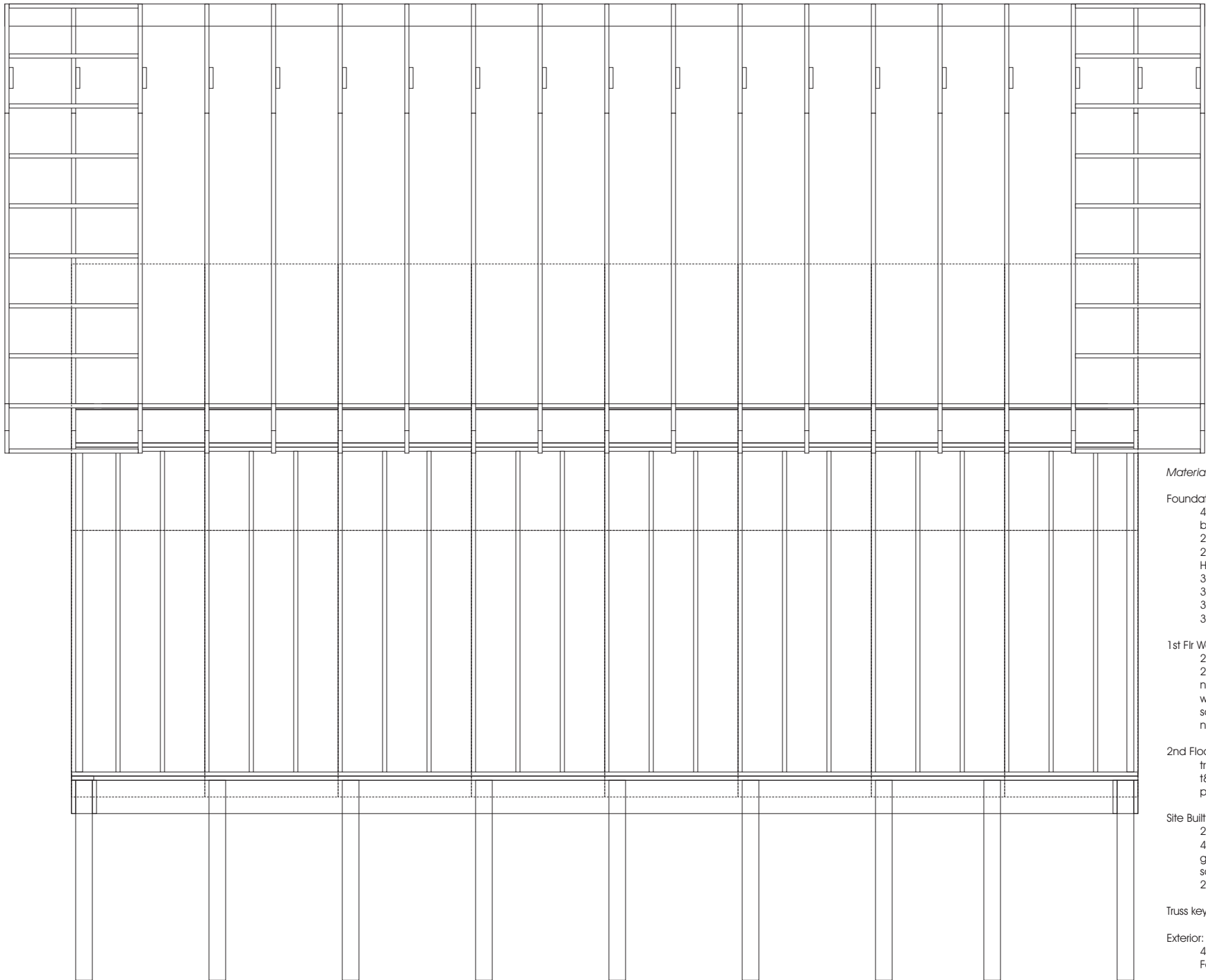


**Foundation Detail**



**Materials:**

- Foundation:
  - 4"x4"x6' PT - 6
  - bag of quickrete - 6
  - 2"x12"x12' - 4
  - 2"x10"x12' - 2
  - Hot Dip Galv 3/8"x3" lag - 28
  - 3/8" hot dip galv washer - 28
  - 3" stainless screws - 5lb
- 1st Flr Walls:
  - 2"x4"x10' - 24
  - 2"x12"x12' SPF - 4
  - 2"x4" plates - 72'
  - nails (will need to screw walls down w/stainless screws or hot dipped nails)
- 2nd Floor floor
  - truss system & Flooring t&g ply (see floor plan p.5)
- 2nd Floor Wall
  - 2"x4"x10' - 18
  - 2"x4" plates - 24'
  - 2"x10"x8' - 1 (will cover window on other gable)
- Site Built Trusses (each) - see p2 & p5
  - 2"x8"x10' SPF - 5
  - 4"x8"x1/2" plywood - 1/2
  - glue
  - screws
- Exterior:
  - 4x8' T1-11 - 14
  - 9x8' Garage door - 2
  - 3040 Single-hung window - 1
- trim for window and garage door



*Materials:*

Foundation:

- 4"x4"x6' PT - 8
- bag of quickrete - 8
- 2"x12"x12' - 6
- 2"x10"x12' - 3
- Hot Dip Galv 3/8"x3" lag - 36
- 3/8" hot dip galv washer - 36
- 3" stainless screws

1st Fir Walls:

- 2"x4"x10' - 36
- 2"x4" plates - 108'
- nails (will need to screw walls down w/stainless screws or hot dipped nails)

2nd Floor floor

- truss system & Flooring
- t&g ply (see floor plan p.5)

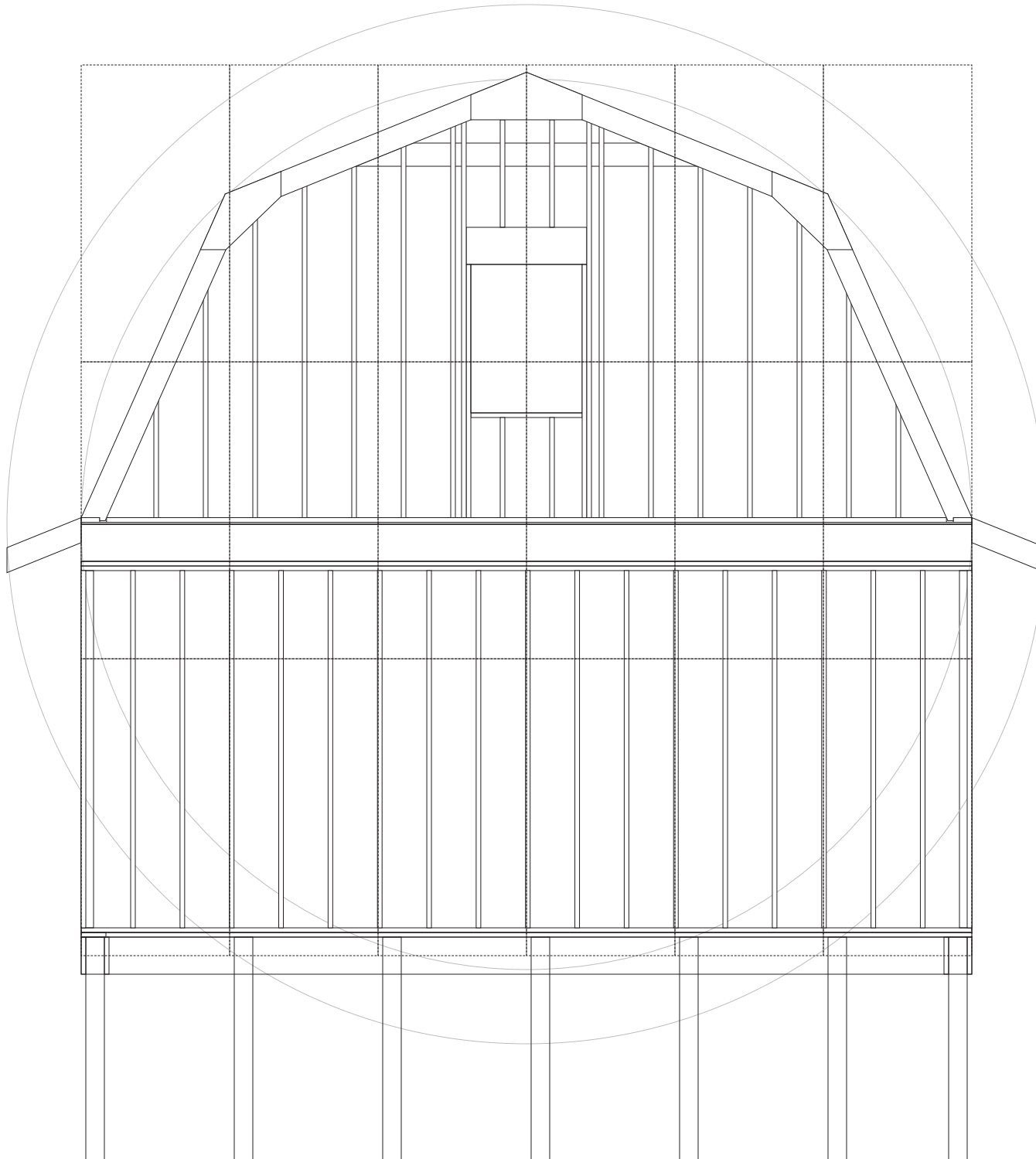
Site Built Trusses - 19 (each)

- 2"x8"x10' SPF - 5
- 4"x8"x1/2" plywood - 1/2
- glue
- screws
- 2"x4"x8' - 10

Truss key 2"x6"x12' - 3

Exterior:

- 4"x8' T1-11 - 12
- Fascia Board - 40'



**Materials:**

Foundation:  
 4"x4"x6' PT - 6  
 bag of quickrete - 6  
 2"x12"x12' - 4  
 2"x10"x12' - 2  
 Hot Dip Galv 3/8"x3" lag - 28  
 3/8" hot dip galv washer - 28  
 3" stainless screws - 5lb

1st Flr Walls:  
 2"x4"x10' - 24  
 2"x4" plates - 72'  
 nails (will need to screw walls down  
 w/stainless screws or hot dipped  
 nails)

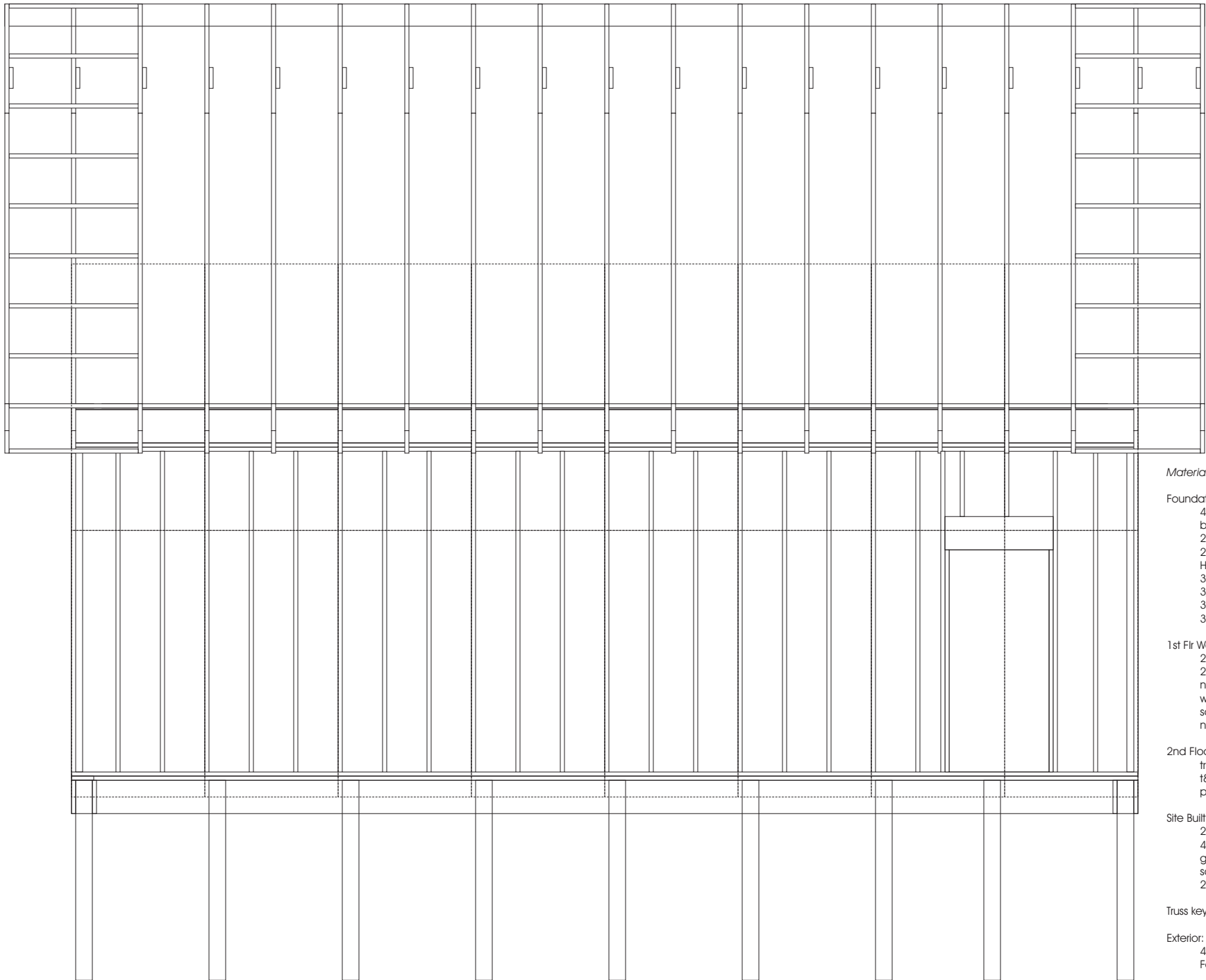
2nd Floor floor  
 truss system & Flooring t&g ply (see  
 floor plan p.5)

2nd Floor Wall  
 2"x4"x10' - 18  
 2"x4" plates - 24'  
 2"x10"x8' - 0 (cover by other gable)

Site Built Trusses (each) - see p2 & p5  
 2"x8"x10' SPF - 5  
 4"x8"x1/2" plywood - 1/2  
 glue  
 screws

Exterior:  
 4"x8' T1-11 - 14  
 3040 Single-hung window - 1

trim for window



*Materials:*

Foundation:

- 4"x4"x6' PT - 8
- bag of quickrete - 8
- 2"x12"x12' - 6
- 2"x10"x12' - 3
- Hot Dip Galv 3/8"x3" lag - 36
- 3/8" hot dip galv washer - 36
- 3" stainless screws

1st Fir Walls:

- 2"x4"x10' - 36
- 2"x4" plates - 108'
- nails (will need to screw walls down w/stainless screws or hot dipped nails)

2nd Floor floor

- truss system & Flooring
- t&g ply (see floor plan p.5)

Site Built Trusses - 19 (each)

- 2"x8"x10' SPF - 5
- 4"x8"x1/2" plywood - 1/2
- glue
- screws
- 2"x4"x8' - 10

Truss key 2"x6"x12' - 3

Exterior:

- 4"x8' T1-11 - 12
- Fascia Board - 40'

- 3068 Ext. door - 1
- 2"x12"x4' - 1

4x8x3/4" OSB Plywood - 50  
Roofing/15# felt - 15 squares  
ridge vent - 36'  
drip edge - 320'  
fascia - 320'  
soffit - 620' (dbl check)  
alum roof nails  
white alum trim nails

