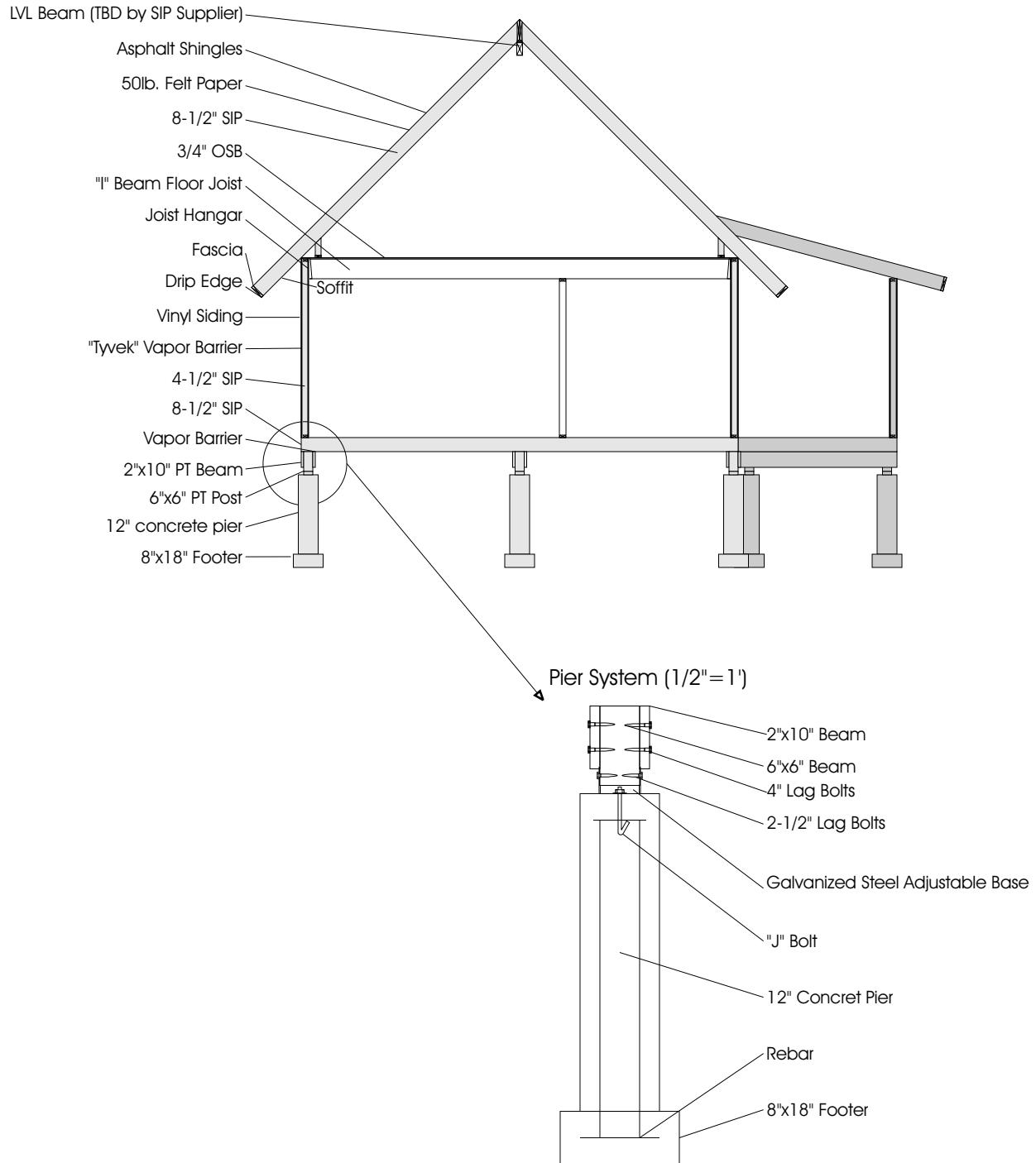


Homsher Homes - Studio Cottage
 Dave Homsher - 330-281-1256
 Kim Homsher - 330-296-7757

Section View



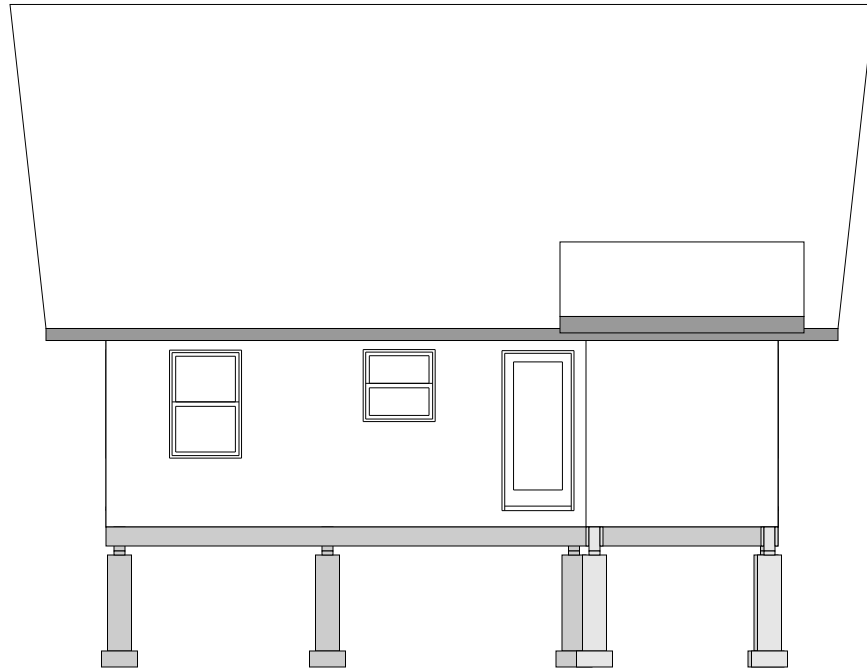
Homsher Homes - Studio Cottage
Dave Homsher - 330-281-1256
Kim Homsher - 330-296-7757

South Elevation



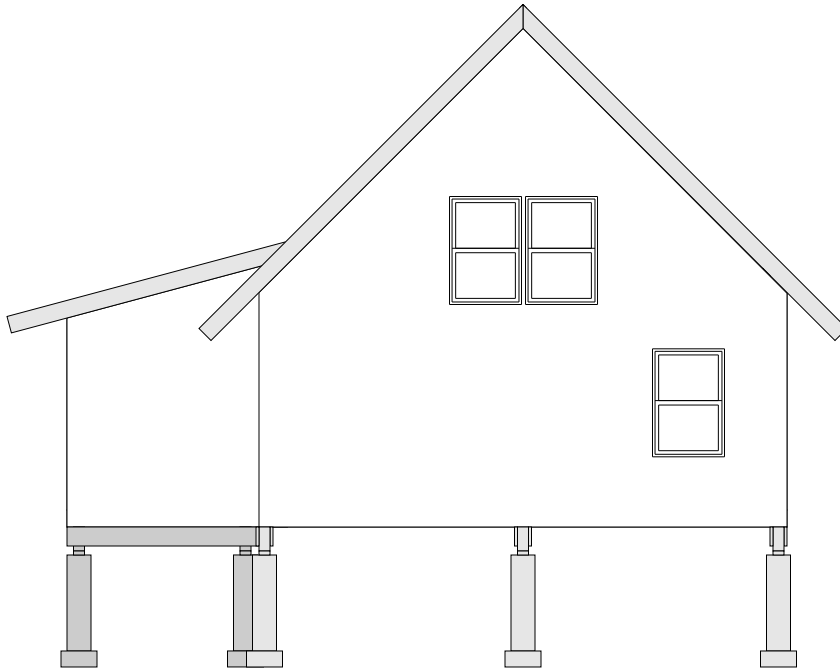
Homsher Homes - Studio Cottage
Dave Homsher - 330-281-1256
Kim Homsher - 330-296-7757

East Elevation



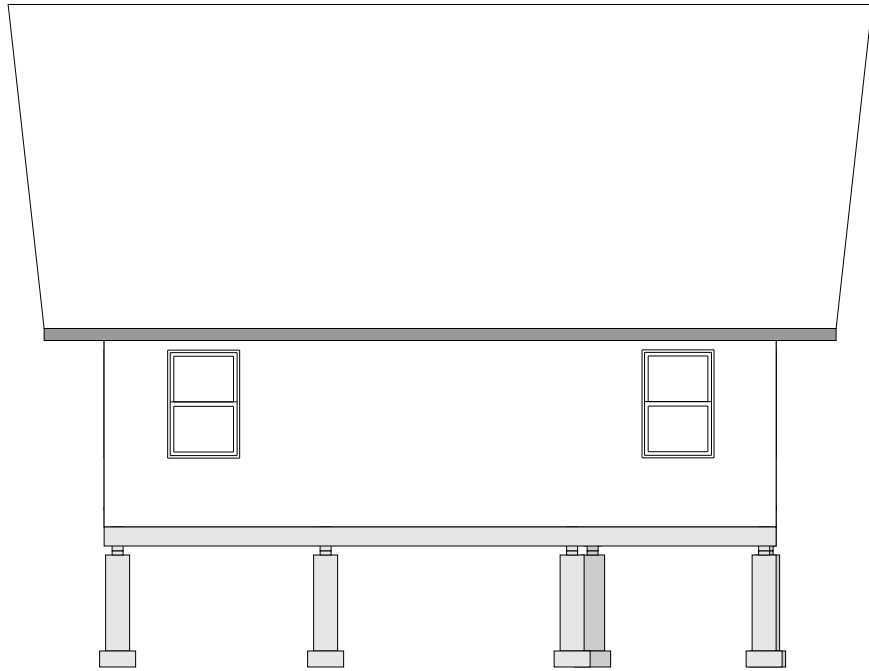
Homsher Homes - Studio Cottage
Dave Homsher - 330-281-1256
Kim Homsher - 330-296-7757

North Elevation



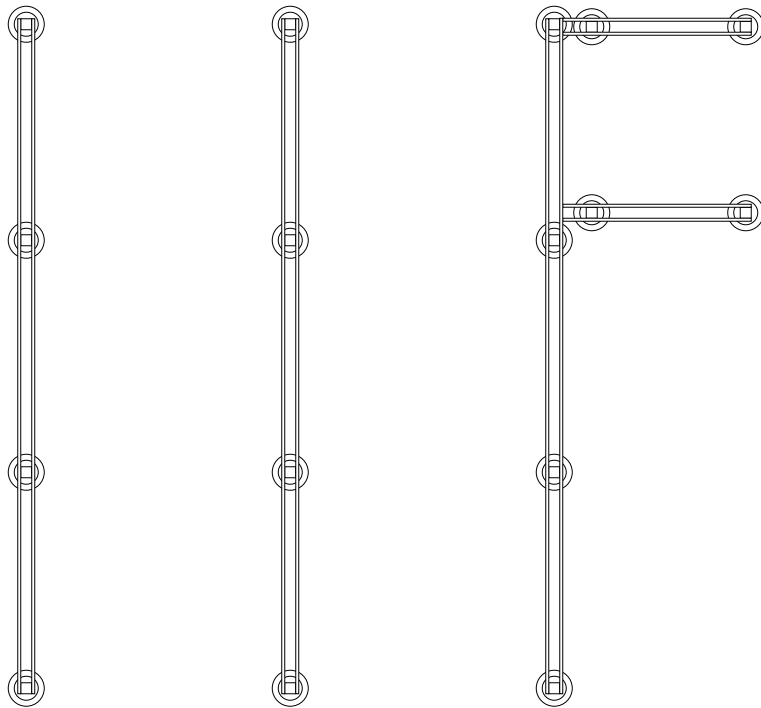
Homsher Homes - Studio Cottage
Dave Homsher - 330-281-1256
Kim Homsher - 330-296-7757

West Elevation



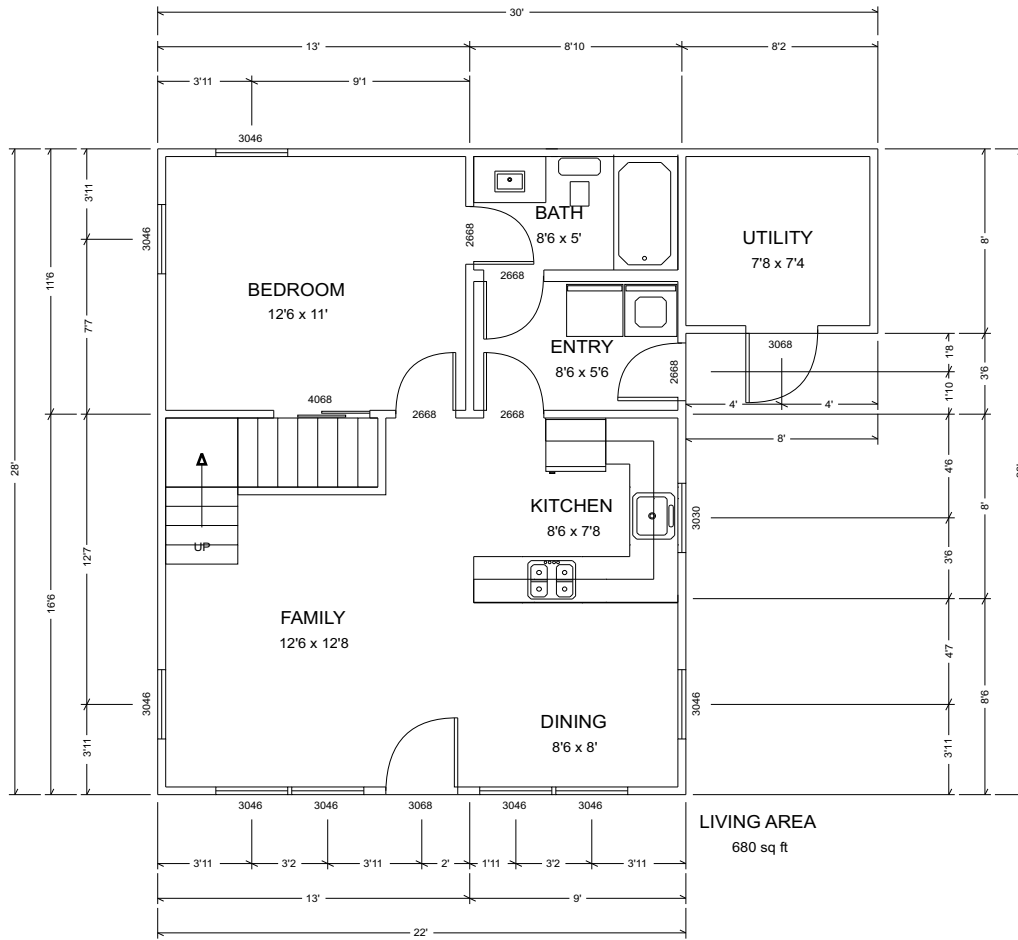
Homsher Homes - Studio Cottage
Dave Homsher - 330-281-1256
Kim Homsher - 330-296-7757

Foundation Plan



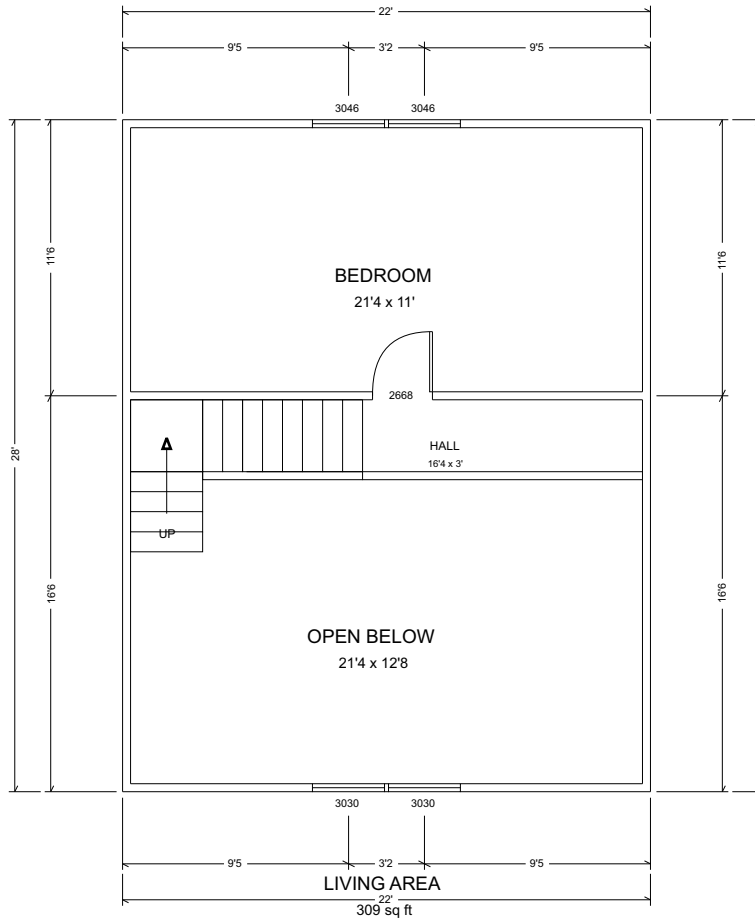
Homsher Homes - Studio Cottage
Dave Homsher - 330-281-1256
Kim Homsher - 330-296-7757

1st Floor Plan



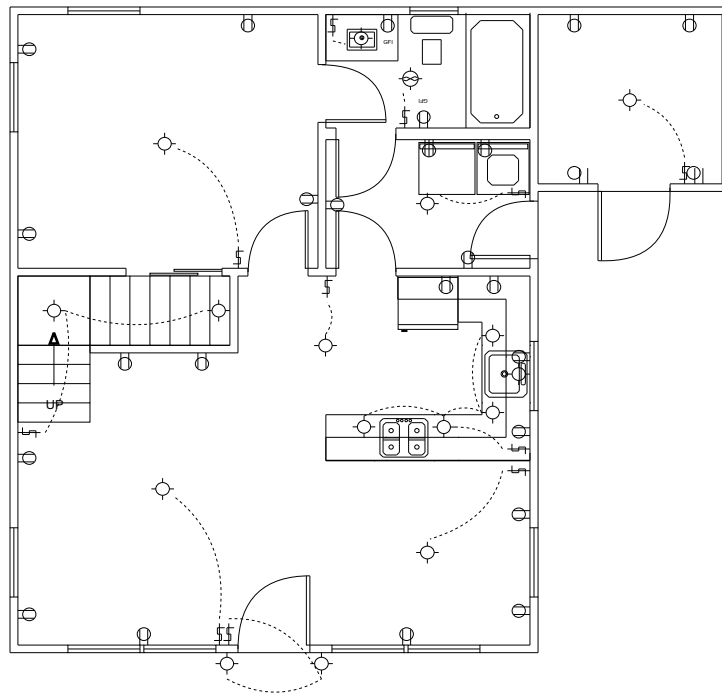
Homsher Homes - Studio Cottage
Dave Homsher - 330-281-1256
Kim Homsher - 330-296-7757

2nd Floor Plan



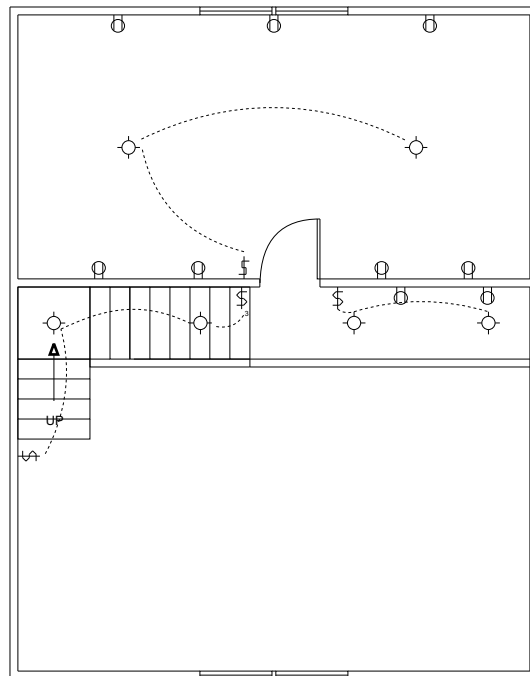
Homsher Homes - Studio Cottage
Dave Homsher - 330-281-1256
Kim Homsher - 330-296-7757

1st Floor Electrical



Homsher Homes - Studio Cottage
Dave Homsher - 330-281-1256
Kim Homsher - 330-296-7757

2nd Floor Electrical



Homsher Homes - Studio Cottage
Dave Homsher - 330-281-1256
Kim Homsher - 330-296-7757

2nd Floor System

2 - 2"x12"x12' Spruce/Pine/Fir Laminated to Plywood
or I-beam/LVL (Whichever is cheaper)

2"x12" Spruce/Pine/Fir @ 16" O.C.

2"x12" Spruce/Pine/Fir @ 16" O.C.
(40 lb./sq.ft. Live Load / 10 lb./sq.ft. Dead Load)

